

# Adjust-A-Wings

## "INSTRUCTIONS"

**ADJUST-A-WINGS®** REFLECTORS ARE SCIENTIFICALLY DESIGNED FOR THE ADVANCED GROWER. DEVELOPED OVER MANY YEARS BY EXPERTS IN THE HORTICULTURAL INDUSTRY.

**ADJUST-A-WINGS®** REFLECTORS COME IN 2 UNIQUE FINISHES, "**AVENGER**" 97 % REFLECTIVE GLASS COATED SUPER ALLOY. "**DEFENDER**" TITANIUM WHITE HEAT RESISTANT POWDER COATED ALUMINIUM.

### STEP 1

REMOVE CONTENTS  
CHECK AGAINST THE LIST BELOW

- 2 X REFLECTOR WINGS
- 2 X ADJUSTMENT WIRES
- 2 X HANGING HOOKS & THUMB SCREWS
- 1 X LAMPHOLDER



LAMP HOLDERS ARE PACKAGED AND SOLD SEPERATELY.  
2 LAMPHOLDERS CAN BE USED WITH LARGE  
ADJUST-A-WINGS REFLECTORS

### STEP 2

REMOVE THE PLASTIC COATING FROM BOTH WINGS.



### STEP 3

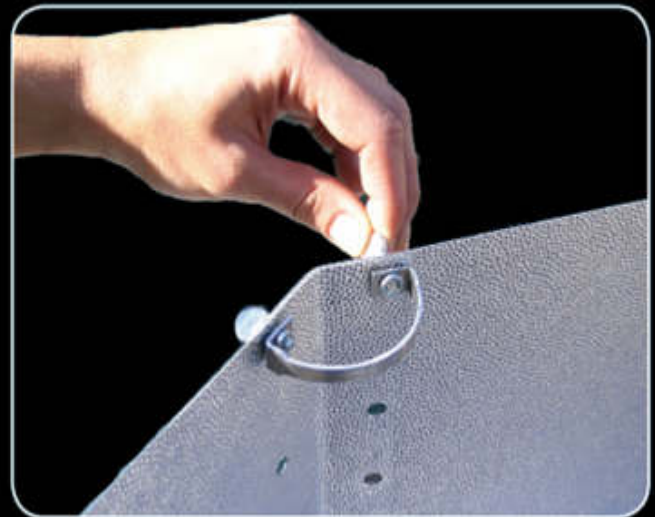
CONNECT BOTH WING SHEETS TOGETHER BY ALIGNING  
BUTTON RIVETS WITH KEYHOLE SLOTS AND THE  
WINGS WILL SIMPLY LOCK TOGETHER.

**NOTE: DO NOT ATTACH ADJUSTMENT WIRES  
BEFORE PROCEEDING TO STEP 4.\***



### STEP 4

ATTACH THE HANGING HOOKS TO BOTH ENDS OF THE  
**ADJUST-A-WINGS** USING THE THUMB SCREWS PROVIDED.



[www.adjustawings.com](http://www.adjustawings.com)



Engineering Excellence Award 2008  
(Primary)

## STEP 5

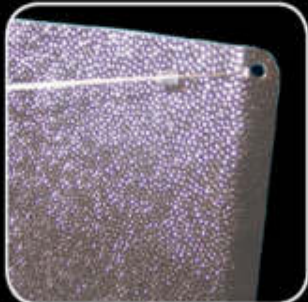
SELECT ONE ADJUSTMENT WIRE. TAKE THE END WITH THE SINGLE STOPPER AND THREAD IT THROUGH THE FIRST KEYHOLE. THEN THREAD IT BACK THROUGH ONE OF THE OTHER KEYHOLES, AS SHOWN BELOW.

**THIS PRESETS YOUR REFLECTORS WIDTH.**

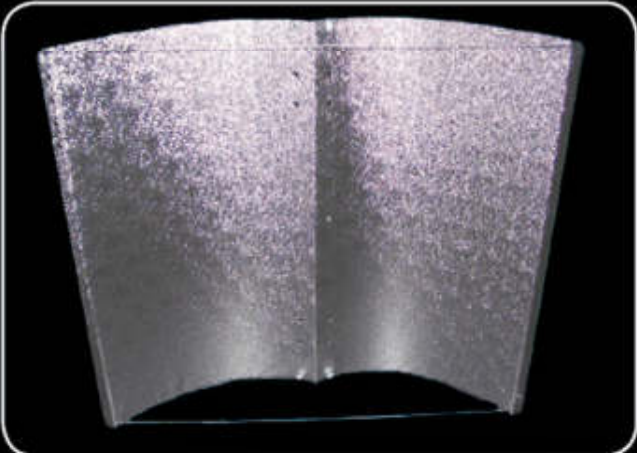


## STEP 6 IMPORTANT !!!

WHILE HOLDING THE OPPOSITE END OF THE ADJUSTMENT WIRE (THAT HAS 2 STOPPERS) CAREFULLY BEND THE WINGS BACK AWAY FROM THEIR SPINE AND LOCK THE END STOPPER INTO THE SINGLE KEYHOLE PROVIDED. REPEAT STEPS 5 & 6 AT THE OPPOSITE END OF THE WINGS TO ATTACH THE 2<sup>ND</sup> ADJUSTMENT WIRE.



**NOTE: THE 2<sup>ND</sup> STOPPER ON EACH ADJUSTMENT WIRE IS FOR GRIP ONLY IN THESE PROCEDURES**



**YOUR ADJUST-A-WINGS NOW LOOK LIKE THIS.**

## STEP 7

**ADJUST-A-WINGS** SETTINGS ARE CHANGED BY REVERSING STEP 6 AND CHOOSING A DIFFERENT KEYHOLE POSITION FROM STEP 5

**NOTE: ADJUST ONE END OF THE WIRES AT A TIME**

**WARNING:**  
**FOR SAFE OPERATION, ENSURE THAT THE POWER IS OFF BEFORE ADJUSTING THE WINGS OR LAMPHOLDER.**

## STEP 8

TAKE THE LAMPHOLDER AND USING THE 2 THUMB SCREWS PROVIDED ATTACH AS SHOWN BELOW



**WIDE SETTINGS PRODUCE BROAD EVEN LIGHT PATTERNS FOR MAXIMUM AREA COVERAGE AND DEEP FOILAGE PENETRATION.**  
**NARROW SETTINGS PRODUCE UNIFORM CONCENTRATED LIGHT PATTERNS FOR USE AT GREATER DISTANCES ABOVE PLANTS.**  
**VERTICAL ADJUSTMENTS TO THE LAMPHOLDER PROVIDE A METHOD FOR FINE FOCUS CORRECTION.**

